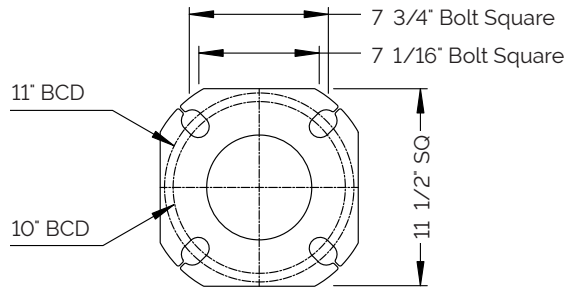
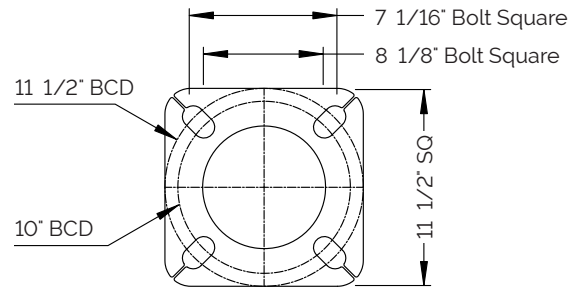




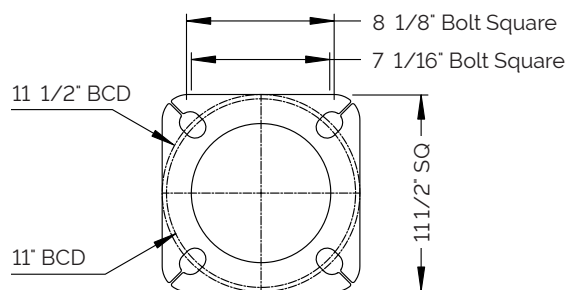
Round Tapered Steel Pole



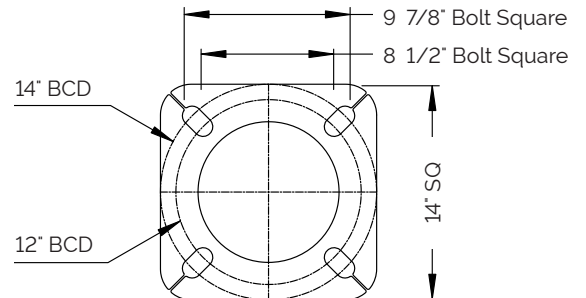
RTS Type A
(1" Anchor Bolts)



RTS Type B
(1" Anchor Bolts)



RTS Type C
(1" Anchor Bolts)



RTS Type D
(1" Anchor Bolts)

- Hand hole ring mounting height is 12" to centre and comes with (4"x7") hand hole cover.
- Wind speeds (mph) in the table denote the maximum wind gust speed at the project site (i.e. gust factor included).
- All poles are supplied with nut covers, shims and top plastic cap.
- Maximum EPA rating includes fixture(s) and supporting arm(s) and is for standard pole installation on concrete bases/footings.
- Pole designs based on AASHTO Standard Specifications for Structural Supports for Highway Signs, Luminaires, and Traffic Signals.
- Contact Sales Team for custom sizes and/or applications.
- Specific information and details may be subject to change without notice.
- Please see Warranty and Terms & Conditions.



Round Tapered Steel Pole

CATALOGUE #		FIXTURE INFO
PROJECT NAME		
CITY		
PREPARED BY	DATE	
COMMENTS		
		QUANTITY
		EPA (sq.ft.)
		WEIGHT (lbs)

Catalogue #	Pole Height (ft)	Weight (lbs)	Anchor Bolt Diameter	Base Plate Type	Maximum EPA (sq.ft.)			
					80MPH	90MPH	100MPH	110MPH
RTS10	10	102	1"	A	48.5	38.5	30.5	25.0
RTS12	12	114	1"	A	41.0	32.0	25.5	21.0
RTS14	14	123	1"	A	34.5	27.0	21.5	17.5
RTS16	16	134	1"	A	29.5	23.0	18.0	14.5
RTS18	18	143	1"	A	25.0	19.5	15.5	12.0
RTS20	20	178	1"	B	30.5	23.5	18.5	14.5
RTS22	22	187	1"	B	26.5	20.5	16.0	12.5
RTS24	24	198	1"	B	23.0	17.5	13.5	10.5
RTS26	26	208	1"	B	20.5	15.5	12.0	9.0
RTS28	28	250	1"	C	24.5	18.5	14.0	10.5
RTS30	30	259	1"	C	22.0	16.5	12.5	9.0
RTS32	32'	268	1"	C	19.5	14.5	10.5	8.0
RTS34	34'	278	1"	C	17.5	12.5	9.0	6.5
RTS36	36'	355	1"	D	20.5	15.0	10.5	7.5
RTS38	38	364	1"	D	18.5	13.0	9.5	6.5
RTS39	39	369	1"	D	17.5	12.5	8.5	6.0

Order Entry Info				
HEIGHT (ft)	MOUNTING TYPE (See Note 1)	FINISH TYPE	PC COLOUR	OPTIONS (Click descriptions to view product)
10	TOP TENON MOUNT TT2 - 2 3/8" x 4" tenon TT3 - 2 7/8" x 4" tenon	PC - Powder Coated GALV - Galvanized GALVPC - Galvanized and Powder Coated <i>For PC or GALVPC, please select Colour from next column</i>	WHT - White BLK - Black BZ - Bronze GRY - Grey CC - Custom Colour (RAL-) <i>(Additional charges may apply)</i> N - None	<input type="checkbox"/> DUPR - 1110 Box Provision (Festoon Box) <input type="checkbox"/> DUPRGFI - 1110 Box Provision c/w 15A 120V GFI Receptacle and Weatherproof Cover <input type="checkbox"/> HHSS - Hand Hole Security System <input type="checkbox"/> FBA1 - Flower Basket Arm One Side (See Note 2) <input type="checkbox"/> FBA2 - Flower Basket Arm Dual (See Note 2) <input type="checkbox"/> BA1 - Banner Arms One Side (See Note 3) <input type="checkbox"/> BA2 - Banner Arms Dual (See Note 3) <input type="checkbox"/> AB - Anchor Bolts <input type="checkbox"/> BH - Bullhorns <input type="checkbox"/> N - None
12				
14				
16	SIDE TENON MOUNT <i>Dimensions: 2 3/8" dia. x 5" long</i> ST1 - Single Head ST2 - 2 Heads at 90° ST2B - 2 Heads at 180° ST3 - 3 Heads at 90° ST4 - 4 Heads at 90°	<i>For PC or GALVPC, please select Colour from next column</i>	CC - Custom Colour (RAL-) <i>(Additional charges may apply)</i> N - None	<input type="checkbox"/> DUPR - 1110 Box Provision (Festoon Box) <input type="checkbox"/> DUPRGFI - 1110 Box Provision c/w 15A 120V GFI Receptacle and Weatherproof Cover <input type="checkbox"/> HHSS - Hand Hole Security System <input type="checkbox"/> FBA1 - Flower Basket Arm One Side (See Note 2) <input type="checkbox"/> FBA2 - Flower Basket Arm Dual (See Note 2) <input type="checkbox"/> BA1 - Banner Arms One Side (See Note 3) <input type="checkbox"/> BA2 - Banner Arms Dual (See Note 3) <input type="checkbox"/> AB - Anchor Bolts <input type="checkbox"/> BH - Bullhorns <input type="checkbox"/> N - None
18				
20				
22				
24				
26	DRILL PATTERN DP1 - Single Head DP2 - 2 Heads at 90° DP2B - 2 Heads at 180° DP3 - 3 Heads at 90° DP4 - 4 Heads at 90°	<i>For PC or GALVPC, please select Colour from next column</i>	CC - Custom Colour (RAL-) <i>(Additional charges may apply)</i> N - None	<input type="checkbox"/> DUPR - 1110 Box Provision (Festoon Box) <input type="checkbox"/> DUPRGFI - 1110 Box Provision c/w 15A 120V GFI Receptacle and Weatherproof Cover <input type="checkbox"/> HHSS - Hand Hole Security System <input type="checkbox"/> FBA1 - Flower Basket Arm One Side (See Note 2) <input type="checkbox"/> FBA2 - Flower Basket Arm Dual (See Note 2) <input type="checkbox"/> BA1 - Banner Arms One Side (See Note 3) <input type="checkbox"/> BA2 - Banner Arms Dual (See Note 3) <input type="checkbox"/> AB - Anchor Bolts <input type="checkbox"/> BH - Bullhorns <input type="checkbox"/> N - None
28				
30				
32				
34	N - None	<i>For PC or GALVPC, please select Colour from next column</i>	CC - Custom Colour (RAL-) <i>(Additional charges may apply)</i> N - None	<input type="checkbox"/> DUPR - 1110 Box Provision (Festoon Box) <input type="checkbox"/> DUPRGFI - 1110 Box Provision c/w 15A 120V GFI Receptacle and Weatherproof Cover <input type="checkbox"/> HHSS - Hand Hole Security System <input type="checkbox"/> FBA1 - Flower Basket Arm One Side (See Note 2) <input type="checkbox"/> FBA2 - Flower Basket Arm Dual (See Note 2) <input type="checkbox"/> BA1 - Banner Arms One Side (See Note 3) <input type="checkbox"/> BA2 - Banner Arms Dual (See Note 3) <input type="checkbox"/> AB - Anchor Bolts <input type="checkbox"/> BH - Bullhorns <input type="checkbox"/> N - None
36				
38				
39	N - None	<i>For PC or GALVPC, please select Colour from next column</i>	CC - Custom Colour (RAL-) <i>(Additional charges may apply)</i> N - None	<input type="checkbox"/> DUPR - 1110 Box Provision (Festoon Box) <input type="checkbox"/> DUPRGFI - 1110 Box Provision c/w 15A 120V GFI Receptacle and Weatherproof Cover <input type="checkbox"/> HHSS - Hand Hole Security System <input type="checkbox"/> FBA1 - Flower Basket Arm One Side (See Note 2) <input type="checkbox"/> FBA2 - Flower Basket Arm Dual (See Note 2) <input type="checkbox"/> BA1 - Banner Arms One Side (See Note 3) <input type="checkbox"/> BA2 - Banner Arms Dual (See Note 3) <input type="checkbox"/> AB - Anchor Bolts <input type="checkbox"/> BH - Bullhorns <input type="checkbox"/> N - None
39				
Pole Specs	Mounting	Finish Type	PC Colour	Options
RTS				

Note 1: Please provide fixture cutsheet.

Note 2: Please provide basket weight, arm length and mounting height.

Note 3: Please provide banner size and mounting height.

Sample Catalogue #: RTS20-ST1-GALVPC-BLK-HHSS-BA1

Reset Order Entry Form